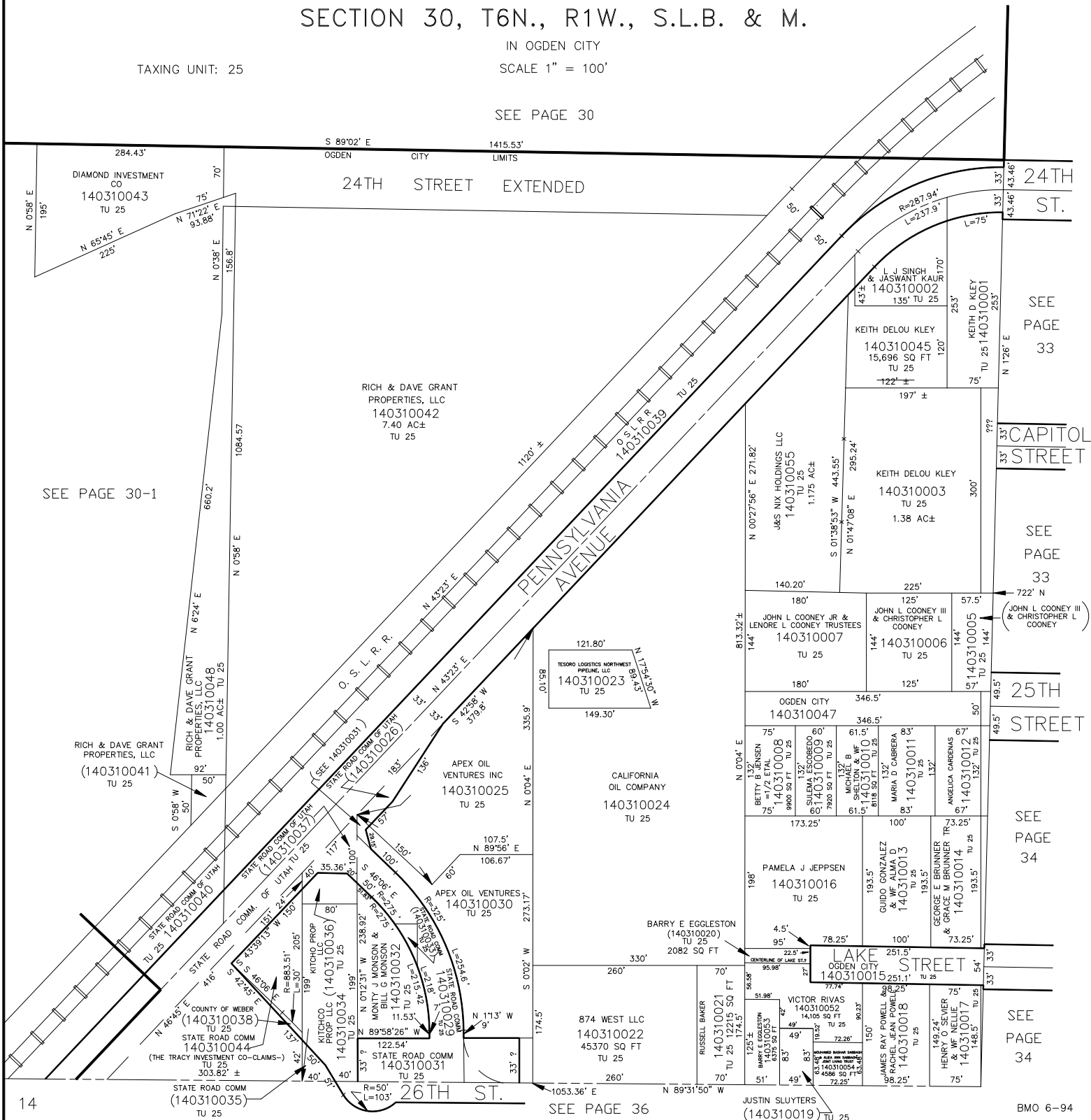


PART OF S.W. 1/4 OF
SECTION 30, T6N., R1W., S.L.B. & M.

TAXING UNIT: 25

IN OGDEN CITY
SCALE 1" = 100'

SEE PAGE 30



SEE PAGE 30-1

24TH ST.

SEE PAGE 33

CAPITOL STREET

SEE PAGE 33

(JOHN L COONEY III & CHRISTOPHER L COONEY)

25TH STREET

SEE PAGE 34

LAKE STREET

SEE PAGE 34

SEE PAGE 36